

Summary

2010/11 was a challenging year for British Waterways (BW). But despite a difficult economic climate and the need to implement a cost reduction and recovery plan, BW still spent £128.2m on maintaining its historic canals and rivers. Good quality conservation work was performed and legal compliance for planned works to BW heritage assets remained steady at >99%. Strong progress was made with heritage champion training and volunteers played an important part in enhancing BW's heritage capacity. Communications with the BWA Heritage sub-group increased with new liaison arrangements with BW's Property team. The year culminated with BW being given a Special Mention Award in the Institution of Civil Engineers Historic Bridges and Infrastructure Awards for 2010.

Introduction

The State of the Waterways' Heritage report provides information and data related to BW's built heritage assets and heritage management activities for 2010/11. This report updates the 2009/10 report.

In 2010/11 BW's main heritage objectives were:

- Maintaining heritage advice & support in challenging times.
- Developing BW heritage champions.
- 100% statutory compliance.
- Recruiting volunteers to work alongside us.
- Increasing liaison with supporters and external groups.



Volunteers repainting the turnover bridge at Tower Wharf, Chester

Designated Assets

Scheduled Monuments

The BW estate contains a number of 'industrial' scheduled monuments especially in Scotland, where four canals are divided into continuously scheduled lengths.

- UK-wide BW is responsible for 98 scheduled monuments.
- Roughly 3.35% of BW's total number of scheduled monuments and listed buildings are scheduled monuments.

Listed Buildings

BW's listed buildings (which includes grade I, II* and II structures in England and Wales and category A, B and C in Scotland) represents the third largest assemblage in single ownership in the UK after the Church of England and the National Trust.

- BW is responsible for 2,819 listed buildings.
- The greatest concentration of listed buildings in England and Wales (1,282) is found in the North in BW's waterway units of North West, Manchester & Pennine, and North Wales & Borders. Scotland has 92 listed buildings because most of its canals are scheduled monuments.
- The number of BW's listed buildings has increased by 60 over 2009/10, largely owing to more accurate reporting.



Willow Cottage Bridge, Caldon Canal – heritage repairs won a national Highly Commended Prize in 2010.

Waterway	Scheduled Monuments		Listed Buildings I/A	Listed Buildings II*/B	Listed Buildings II/C	Total number of Listed Buildings	
	2009/10	2010/11	2010/11	2010/11	2010/11	2009/10	2010/11
Highlands	20	20	4	44	24	72	72
Lowlands	28	28	3	12	5	20	20
North-West	3	3	2	4	411	417	417
North-East	7	7	2	3	163	166	168
Manchester & Pennine	3	3	1	3	477	481	481
North-Wales & Border	8	8	1	14	369	216	384
West Midlands	7	7	1	7	241	322	249
Central Shires	0	0	0	0	179	189	179
East Midlands	0	0	0	3	82	107	85
South Wales & Severn	5	6	0	3	265	279	268
South-East	5	5	0	2	306	308	308
Kennet & Avon	7	7	2	9	130	128	141
London	7	4	2	2	43	54	47
BW Total	100	98	18	106	2,695	2,759	2,819

Table 1. Scheduled Monuments & Listed Buildings

Conservation Areas

Many BW assets lie within a conservation area and entire canals have been designated as conservation areas in the past, with their boundaries largely conforming to BW's own estate boundaries.

- 81 waterways, or sections of waterways, are designated as linear conservation areas.
- 230 other (non-linear) conservation areas are bisected by BW waterways.

Recent years have seen conservation areas added to Heritage at Risk registers in England and BW is currently affected by 10 of these (see Heritage at Risk below).

Waterway	Linear conservation area	Other conservation area	Total
Highlands	0	2	2
Lowlands	1	7	8
North-West	1	28	29
North-East	17	0	17
Manchester & Pennine	33	16	49
North-Wales & Border	1	14	15
West Midlands	4	35	39
Central Shires	2	12	14
East Midlands	0	23	23
South Wales & Severn	5	17	22
South-East	3	23	26
Kennet & Avon	0	25	25
London	14	28	42
BW Total	81	230	311

Table 2. Conservation Areas

Other Heritage Designations

Other heritage designations that directly or potentially affect BW's waterways, include:

- **Registered Parks & Gardens/Designed Landscapes (Scotland)** - 63 currently adjoin (lie within 150 metres of a waterway) or are bisected by a waterway, including: Cassiobury Park, Dochfour Gardens, Sydney Gardens, Regent's Park, Halton House, Bryntisilio.
- **Registered Battlefields** - 9 currently adjoin (lie within 150 metres of a waterway) or are bisected by a waterway, including: Bosworth Field (1485), Newbury (1643), Worcester (1651).
- **World Heritage Sites** – 6 affect BW waterways and include: Blaenavon Industrial Landscape (Mon & Brec Canal), City of Bath (Kennet & Avon Canal), Liverpool – Maritime Mercantile City (Leeds & Liverpool Canal), Pontcysyllte Aqueduct and Canal (Llangollen Canal), Saltaire (Leeds & Liverpool Canal), Frontiers of the Roman Empire (Forth & Clyde Canal).
- **National Parks** – 3 affect the BW estate: Yorkshire Dales, Peak District and Brecon Beacons.

Waterway	Parks & Gardens	Battlefields	World Heritage Sites	National Parks
Highlands	2	0	0	0
Lowlands	0	0	1	0
North-West	7	0	2	1
North-East	6	2	0	0
Manchester & Pennine	2	0	0	1
North-Wales & Border	9	1	1	0
West Midlands	8	0	0	0
Central Shires	6	1	0	0
East Midlands	4	1	0	0
South Wales & Severn	1	2	1	1
South-East	5	1	0	0
Kennet & Avon	2	1	1	0
London	11	0	0	0
BW Total	63	9	6	3

Table 3. Other Heritage Designations

Designation	England	Wales	Scotland
Listed Buildings	2,508	219	92
Scheduled Monuments	47	3	48
Conservation Areas	297	4	10
Registered Parks & Gardens/Historic Landscapes	51	10	2
Registered Battlefields	9	0	0
World Heritage Sites	3	2	1
National Parks	2	1	0

Table 4. Comparative Heritage Designations for the UK

Heritage at Risk

BW has consistently reduced its numbers of Heritage at Risk (HaR) assets, but local authorities and English Heritage (in England) continue to place new entries on their 'at risk' registers. In March 2011 a review of BW's HaR assets was undertaken by a skilled heritage volunteer. This was done by contacting conservation officers at each of the relevant local authorities. This review showed that:

- BW owned 71 HaR assets, of which 54 are listed buildings, 1 a scheduled monument and 16 are conservation areas. (Included in these totals is the number of heritage assets awaiting removal from HaR registers).
- 21% of HaR assets are canal bridges, many of which need relatively minor repairs to get them removed from local authority registers.
- 28% of HaR assets are buildings and include 3 warehouses (one of which is North Warehouse, Sharpness) 2 pumping stations (at Soulbury and at Hawkesbury) as well as buildings at Taylors Yard, Chester and Ellesmere Yard on the Llangollen Canal and Craigmarloch Stables on the Forth & Clyde Canal.
- 14 'new' HaR assets were added in 2010/11, of which 11 are listed buildings and 3 are conservation areas, including those at Stone, Elland and Todmorden.
- 18 HaR assets are repaired or awaiting removal from local authority HaR registers, including 11 listed buildings, 1 scheduled monument and 6 conservation areas.

Waterway	No. local authorities & statutory bodies contacted	Replies	No. buildings & structures at risk	No. awaiting removal/repair	No. conservation areas at risk	No. awaiting removal	Total heritage assets on local authority & EH registers	No. heritage assets on EH register only	No. conservation areas on EH register only
North West	18	7	11	2	2	0	13	0	0
North East	1	1	1	0	0	0	1	0	0
Manchester & Pennine	2	0	1	1	1	0	2	0	0
North Wales & Borders	8	2	17	8	1	0	18	0	0
West Midlands	14	7	3	0	5	3	8	1	1
Central Shires	18	5	4	0	2	0	6	2	1
East Midlands	13	2	1	0	0	0	1	0	0
South Wales & Severn	13	5	6	0	1	1	7	1	1
South East	14	4	4	0	1	0	5	0	0
Kennet & Avon	8	3	3	0	0	0	3	0	0
London	22	4	1 SM	1 SM	3	2	4	4	3
Scotland	0	0	3	0	0	0	3	1	0
BW Total	131	40	55	12	16	6	71	9	6

Table 5. Heritage at Risk

Heritage Asset Management

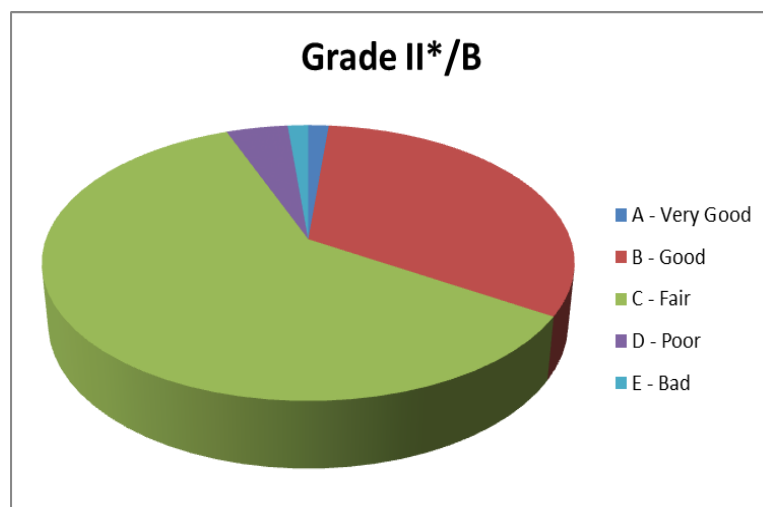
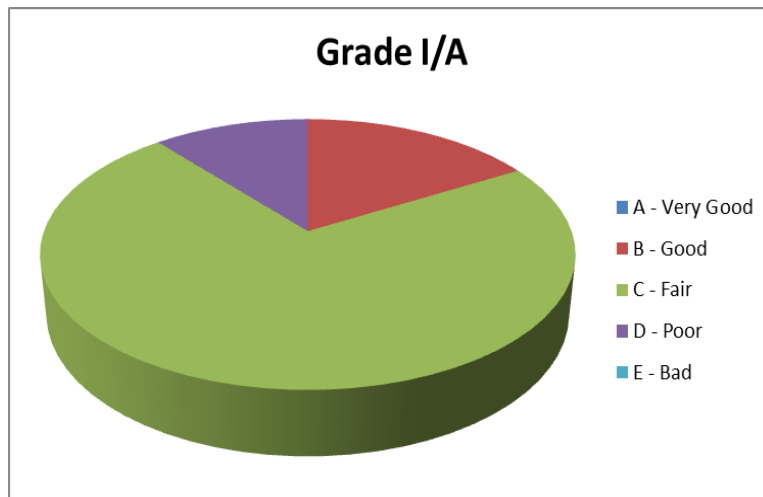
Condition of Principal Assets

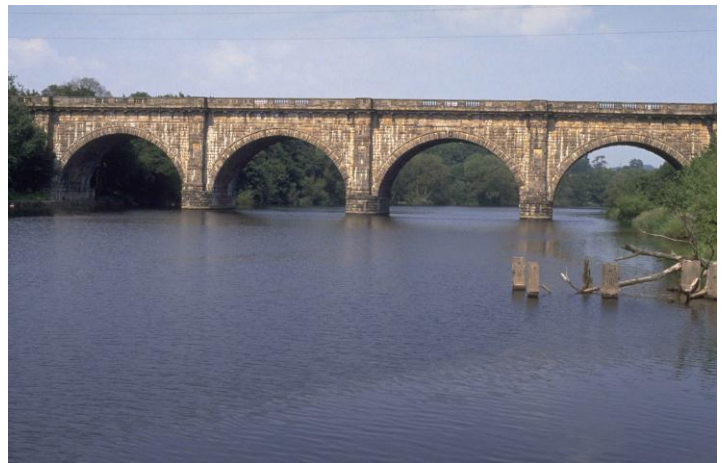
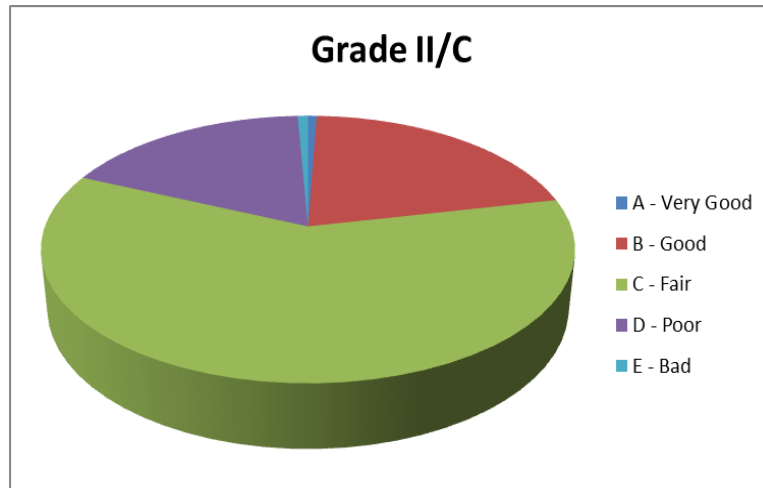
BW's asset management data for 2010/11 showed that of a total of 2,182 designated heritage assets:

- 1,638 were graded in conditions A – C
- 358 were graded condition D- E

(Note: minor heritage assets e.g. mileposts are not included in asset management data.)

Two grade I listed buildings (Marple Aqueduct which is subject to a Scheduled Monument Management Agreement with English Heritage, and Lune Aqueduct, which is currently undergoing HLF supported repairs) are graded condition D. Four grade II* listed buildings (including the King's Norton Guillotine Lock, which is also a scheduled monument) are graded condition D and one (Wrenbury Frith Bridge, a wooden lift-bridge on the Llangollen Canal is graded condition E.





Left: Former Widcombe pumping station chimney, Kennet & Avon Canal, Bath, a grade II listed heritage asset at risk undergoing repairs in early 2011. Right: Lune Aqueduct, Lancaster Canal, a grade I listed building in AIP condition grade D is undergoing repairs phased over 2010/11-2012 with HLF support.

Heritage Incident Notifications

BW's notification process for recording incidents of damage or unauthorised works to heritage assets gives insight into typical problems affecting waterways heritage. Graffiti remains the lead incident at 42%, followed by accidental damage (e.g. vehicle damage to bridges) at 34%. 16% of incidents are attributable to malicious damage (e.g. vandalising historic fabric, pushing coping stones into the water).

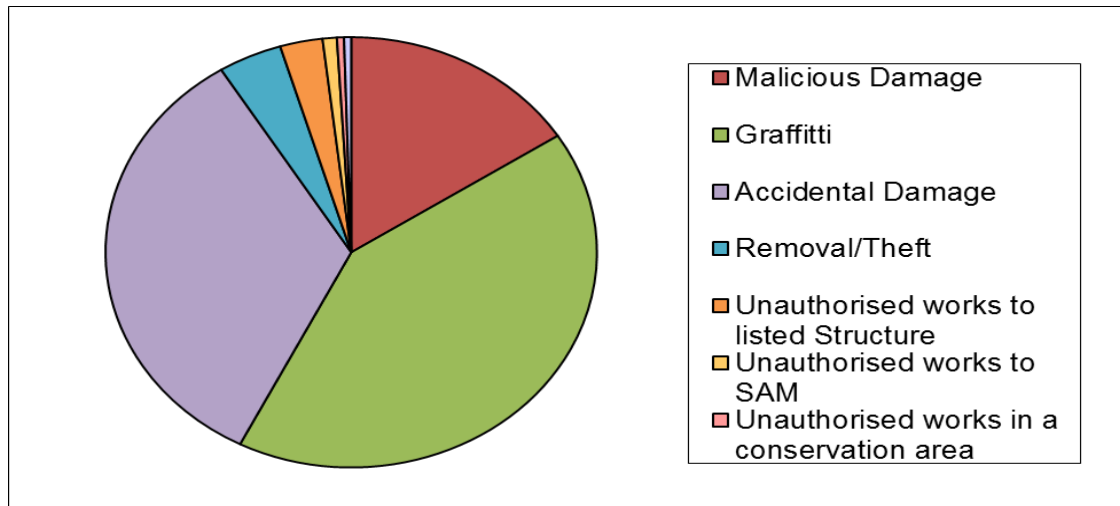


Figure 2. Heritage Notifications - Cumulative Breakdown by Incident Type

Heritage Consents

Heritage consents include formal listed building (LBC), scheduled monument (SMC) and conservation area consent (CAC). Clearances (where a local authority or statutory heritage agency agrees works in writing but no formal consent is required) are also included in Table 5. In 2010/11 works to 353 designated heritage assets took place. Two minor incidents of unauthorised works were recorded during the year, giving a score of over 99% for compliance, which is an excellent result.

- 164 scheduled monument, listed building or conservation area consents were granted.
- 189 clearances were granted.

Despite challenging financial conditions, the total number of consents and clearances in the year were still greater than 2009/10 (164 consents and 156 clearances) but were fewer than in 2008/09 (332 consents and 339 clearances) when a major safety campaign was underway and heritage assets (mainly locks) were affected by the need to make improvements and fix multiple warning signs in place.

Waterway	Consents granted				Clearance granted				Consents refused				TOTAL # jobs	Unauthorised works
	SMC	LBC	CAC	Total	SAM	LB	CA	Total	SMC	LBC	CAC	Total		
Highlands	10	0	0	10	0	0	0	0	0	0	0	0	10	0
Lowlands	34	0	0	34	0	0	0	0	0	0	0	0	34	0
North-West	0	16	0	16	0	12	0	12	0	0	0	0	28	0
North-East	0	13	0	13	0	3	0	3	0	0	0	0	16	0
Manchester & Pennine	0	25	0	25	0	8	0	8	0	0	0	0	33	0
North-Wales & Border	1	8	0	9	19	34	0	53	0	0	0	0	62	1
West Mids	0	0	1	1	1	17	6	24	0	0	0	0	25	0
Central Shires	1	21	0	22	0	0	0	0	0	0	0	0	22	0
East Mids	1	11	0	12	0	0	0	0	0	0	0	0	12	0
South Wales & Severn	0	2	0	2	0	14	0	14	0	0	0	0	16	0
South-East	0	5	0	5	5	47	0	52	0	0	0	0	57	0
Kennet & Avon	3	6	0	9	6	12	0	18	0	0	0	0	27	0
London	3	3	0	6	2	3	0	5	0	0	0	0	11	1
BW Total	53	110	1	164	33	150	6	189	0	0	0	0	353	2

Table 6. Heritage Consents & Clearances

Management Agreements

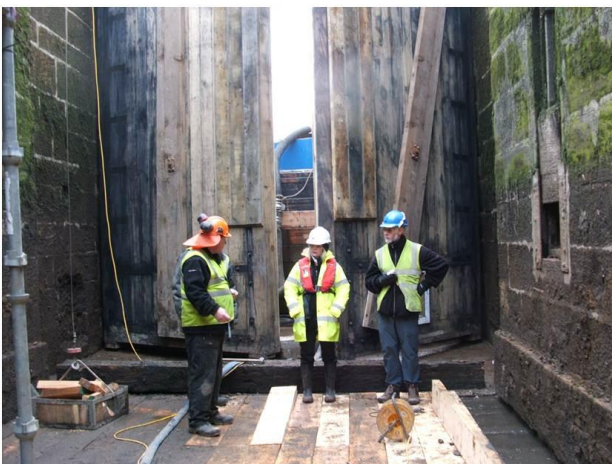
Management agreements offer potential to facilitate medium to long term management of heritage assets by offering some prior agreement for defined works and thus streamlining procedures and reducing costs. PPS5 Planning for the Historic Environment (England only) highlights the potential benefits of Heritage Partnership Agreements (HPAs). There is no obligation to enter into a HPA between a local planning authority and owner, but BW has been trialling the use of HPAs in England and is reviewing their effectiveness.

Scheduled Monument Management Agreements (SMMAs) have been around for a number of years and set out and facilitate a range of operations to a scheduled monument which might not normally require scheduled monument consent.

- 3 HPAs (Foxton Locks, Pocklington Canal, Lancaster Canal) signed off and active; 2 drafted and under discussion; 1 in pipeline; 10 potential future candidates.
- 5 SMMAs signed off and active; 3 with English Heritage and awaiting comments; 4 under discussion; 3 aspirational.

Training

In addition to general heritage awareness training and specialist practical courses, BW's heritage champion training scheme made strong progress in England and Wales in 2010/11. This scheme aims to train 50 waterway-based craftsmen to NVQ3 Heritage Skills with heritage-endorsed CSCS card by 2014. It has exceeded this number already, with 61 currently enrolled on the NVQ3 course.



Heritage champions are assessed on the job and by completion of a workbook for the NVQ3 Heritage Skills qualification.

Waterway	Practical training	Awareness training	Heritage champions
Highlands	0	8	0
Lowlands	0	0	0
North-West	16	18	12
North-East	0	45	6
Manchester & Pennine	0	16	12
North-Wales & Border	3	15	7
West Midlands	0	0	3
Central Shires	0	22	5
East Midlands	0	15	6
South Wales & Severn	0	19	0
South-East	12	18	5
Kennet & Avon	5	7	2
London	0	4	3
BW Total	36	187	61

Table 7. Number of Staff Trained in 2010/11

Volunteers

Volunteer support to BW for heritage activity increased greatly in 2010/11 with volunteers working some 2,420 hours, which translates into £54,349 value in equivalent staff time. Volunteers worked on a range of heritage projects, including:

Office-based research – e.g. collecting and updating data on Heritage at Risk assets, compiling canal gazetteers of significant heritage and helping with listed building consent applications.

Restorations – e.g. restoration of the Droitwich Canal and repair of an historic outbuilding at Crofton Pumping Station on the Kennet & Avon Canal and clearing of vegetation from historic lime kilns at Tardebigge Wharf on the Worcester & Birmingham Canal.

Open days – including both European Heritage Open Days and other heritage events.

British Waterways Advisory Forum Heritage Sub-group.

The BWAFF HSG (the group of voluntary experts drawn from waterway groups and societies who help BW with heritage advice and support) held four meetings in 2010/11 and supported BW's heritage activity with advice and specialist knowledge. During the year the group:

- Gave advice on dealing with a number of historic craft.
- Established a regular working liaison with BW's Property department and supported with comments on current and prospective property developments around the BW network.

The Transport Trust Red Wheels scheme

In partnership with the Transport Trust charity BW continued a scheme to celebrate Britain's rich and globally important canal heritage by marking a number of significant heritage sites in England with Red Wheel plaques. In 2010/11 Bingley Five Rise, Anderton Boat Lift and Ellesmere Port received Red Wheels and a further 14 sites (including Wales) were being progressed at the year's end.

Waterway	Heritage Open Day	Other event	No. visitors attending	Volunteer hours		
				Un-skilled	Skilled	Professional
Scotland	0	0	0	0	112	148
North West	0	2	80	0	0	9
North East	0	0	0	0	0	179
Manchester & Pennine	1	0	200	88	20	27
North Wales & Borders	0	2	400	167	0	0
West Midlands	0	0	0	0	0	340
Central Shires	0	0	0	0	138	0
East Midlands	0	0	0	0	0	0
South Wales & Severn	3	1	41	775	0	2
South East	0	1	12	0	0	0
Kennet & Avon	0	1	200	140	0	0
London	3	3	585	24	0	251
Totals	7	10	1,518	1,194	270	956

Table 8. Volunteer Heritage Activity

Property Development

Despite a difficult economic climate BW's property development activity held up well. At the end of March 2011 there were 81 property development sites in various stages of progress, with 41 having heritage considerations relating to them. Of these, the majority (22) are in the North, with the rest in the South (9) and in Scotland (10).

- 2 planning applications were submitted, for Clayton Triangle, Enfield (includes two listed buildings) and Loughborough Wharf (no heritage designations on site).
- Redevelopment works to Mayors Boatyard, Wigan were completed in August 2010.

For residential disposals an agreed heritage assessment process was followed and where appropriate, heritage covenants were imposed on disposals. Repairs carried out to structures of heritage value included:

- Internal repairs to the warehouse at Greyfriars Road in Doncaster (of local and waterway heritage interest).
- Chimney & roof repairs at Beech House, Ellesmere (listed grade II*).
- Roof & chimney repairs at the Roundhouse, Birmingham (listed grade II*).
- Significant repairs to Hawkesbury Pump-house (listed grade II).

In addition, BW's heritage residential refurbishment project saw works carried out or begun on 6 of a total of 27 properties in England being retained specifically for their heritage value, including canal cottages at Cropredy Lock (Oxford Canal), Hanwell Locks (Grand Union Canal), Little Venice (Regent's Canal), St Pancras Lock (Regent's Canal) and Stocker's Lock (Grand Union Canal).

2010/11 saw the establishment of a working liaison with the BWA Heritage sub-group. Reports and site proposals have been shared between the group and BW's Property team and accompanied visits were undertaken to various sites including: Marple, Doncaster, Finsley Gate, Mayors Boatyard, Ashley Lane and Clayton Triangle. The group also visited Icknield Port Loop, the Roundhouse/Fiddle & Bone, Sherborne Wharf and Padworth.

An external consultation exercise was undertaken and dialogue continues with Marple Civic Society and waterway user groups in respect of the potential development of Marple Wharf at the junction of the Macclesfield and Peak Forest Canals.

Conclusion

In 2010/11 for the seventh year running over 90% of the UK population ‘agreed’ that canals are an important part of the nation’s heritage, with 71% ‘strongly agreeing’ (compared to only 41% in 2004). This is encouraging both in the light of BW’s heritage activity and achievements and ahead of the new waterways charity that will be established in 2012 in England and Wales. Beyond 2012 BW Scotland, whose canal network is effectively a series of scheduled monuments, will remain within the public sector and will underpin the sustainable management of its canals by developing a long-term heritage strategy to prioritise resources which will safeguard its heritage assets. In summary, 2010/11 saw demonstrable progress in most areas of heritage activity at BW, but this progress is not yet irreversible. Two immediate challenges going forward are firstly to ensure that heritage assets are not neglected in a difficult UK-wide economic climate and secondly to ensure that heritage becomes embedded as one of the key values and objectives of the new waterways charity for England and Wales.

August 2011



BW received an Institution of Civil Engineers Special Mention Award for its heritage conservation work in 2010.